



edgewater lodge  
and restaurant

FOR MEETINGS & RETREATS



### FEATURES:

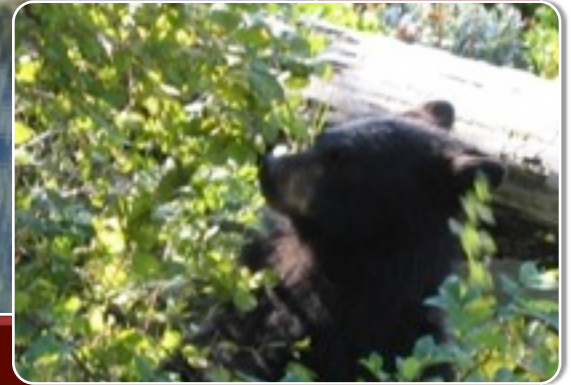
1. 42 ACRES OF PRIVATE LAND, 4 KM NORTH OF WHISTLER VILLAGE
2. FRESH AIR AND NATURAL LIGHT IN OUR VERSATILE MEETING SPACE
3. 12 LAKESIDE, COZY LODGE ROOMS
4. GOURMET, LOCAL & ORGANIC FOOD & BEVERAGE
5. AN OUTDOOR CENTRE FOR CAMPFIRES, CANOE & KAYAK RENTALS & HORSEBACK RIDING
6. FREE WIRELESS INTERNET, BREAKFAST, & PARKING



Situated on **42 acres of waterfront and wonderfully forested private lands** just four kilometres North of **Whistler village** on **Green Lake**



[kylie@edgewater-lodge.com](mailto:kylie@edgewater-lodge.com) 604.932.0688



## CUSTOMIZABLE PACKAGES FOR YOUR GROUP:

1. VERSATILE MEETING SPACE  
- U-SHAPE, BOARDROOM,  
CLASSROOM, BREAKOUT
2. BREAKFAST, LUNCH, DINNER  
& SNACKS AVAILABLE
3. PATIOS & LAWN FOR  
MEETINGS OR AL FRESCO  
DINING
4. OPTION TO HAVE CANOE  
AND KAYAK RENTALS,  
HORSEBACK RIDING, AND  
BEACH VOLLEYBALL ON SITE
5. EACH PACKAGE  
CUSTOMIZED TO SUIT YOUR  
GROUP'S NEEDS



[kylie@edgewater-lodge.com](mailto:kylie@edgewater-lodge.com) 604.932.0688